

# Suttle and Company Real Estate

287.92 Ac TBS, Kerr  
County Mt Home, TX 78858

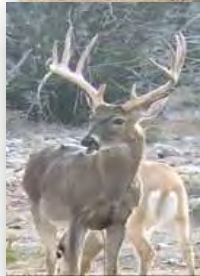


*"Your Real Estate  
Professionals"*



## Attributes

- Rolling Terrain
- High Fenced
- Abundant Game
- Deer Cleaning Station
- Well



## Suttle and Company Real Estate

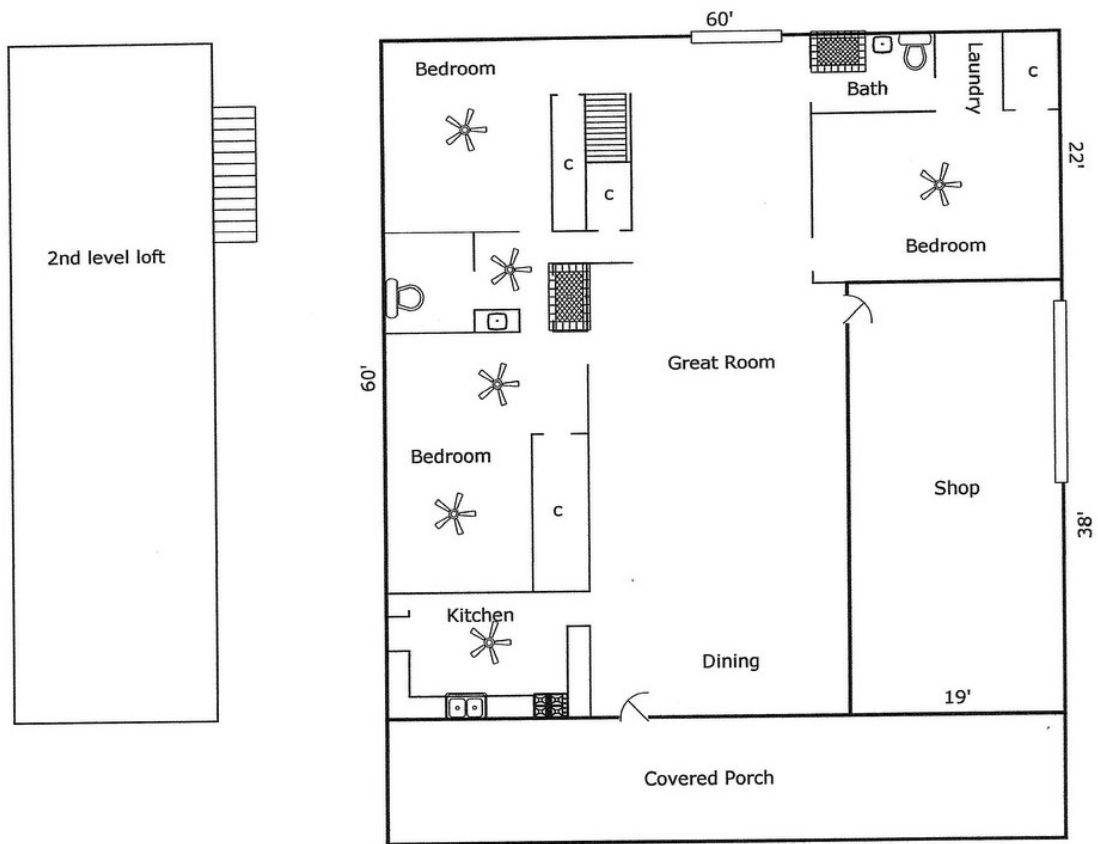
1260 Hwy 83 South  
P.O. Box 606  
Leakey, Tx. 78873

Phone: 830/232-5242  
Fax: 830/232-4283

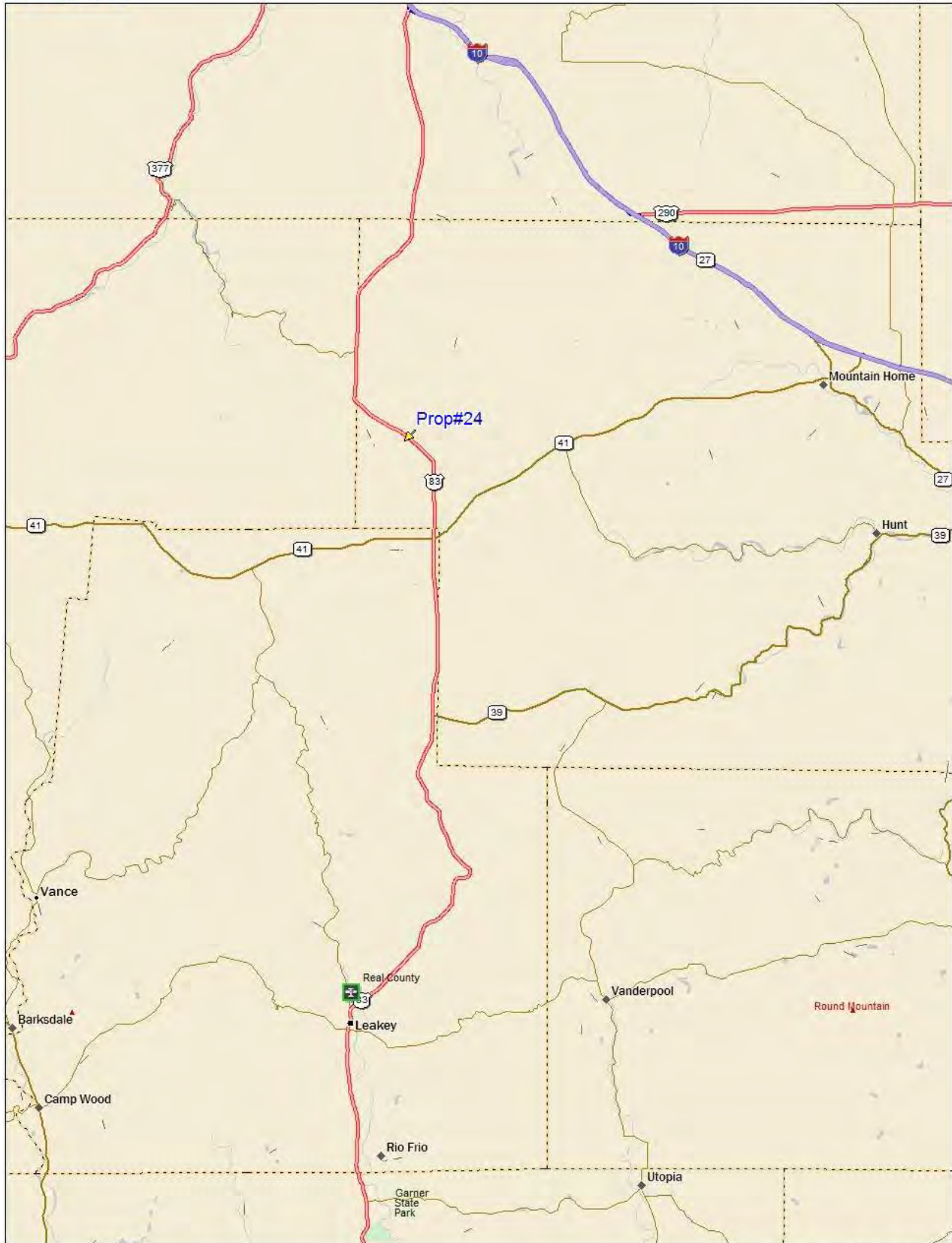
Email: [suttle Realty@hctc.net](mailto:suttle Realty@hctc.net)  
[www.SuttleandCompany.com](http://www.SuttleandCompany.com)

This is a rectangular shaped property with frontage along the west side of Highway 83 approximately 5 miles north of Garven Store in far Northwest Kerr County. The property is high fenced and well-watered with piping from wells to troughs around the ranch. Improvements include a "like new" barn-dominium that has been constructed on a high spot with a beautiful view of the entire property. It features a total of 2878 square feet of heated and cooled space on the ground floor with an additional 1080 square feet on a second level loft. The south end of the building is an enclosed garage/shop containing approximately 780 square feet. The living area is portioned into 3 bedrooms, 2 baths, a kitchen, dining area, and a great room. Each room has plenty of storage space. The entire front of the building is shaded by a covered porch. You can sit on the porch in comfort and watch the sun go down. This place is loaded with exotics and native white tail deer. Exotics include Blackbuck Antelope, Axis Deer, and several varieties of sheep. The topography is rolling and you can drive all over this ranch in a 2 wheel drive vehicle. This is a perfect hunting ranch.









Data use subject to license.

© DeLorme. DeLorme Street Atlas USA® 2010.

www.delorme.com

