

Suttle and Company Real Estate

Prop #50

**Lot 43, Concan Ranch Subdv. 24.71 Ac
Sabinal, Tx 78881**



*"Your Real Estate
Professionals"*



Attributes

- Unrestricted
- Well
- Minutes from Frio River
- Easy Access



Suttle and Company Real Estate

1260 Hwy 83 South
P.O. Box 606
Leakey, Tx. 78873

Phone: 830/232-5242
Fax: 830/232-4283

Email: suttle Realty@hctc.net
www.SuttleandCompany.com

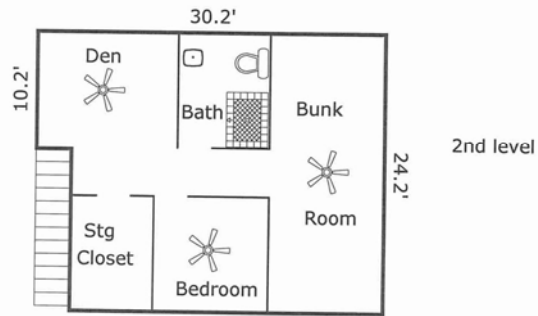
Prop#50

This property consists of three nightly rental units: 2-bedroom 1.5 bath units, a 3-bedroom 2 bath unit, and a 4-bedroom 3 bath unit. Additional improvements consist of a 2,376 square foot shop/equipment storage building with unfinished quarters and approximately 1560 sqft of covered porch area. Each of the rental units are furnished and available turn key, each feature a large rock patio with a wood burning fireplace and BBQ pit. These are perfect rentals for those wanting privacy but in close proximity to Concan and the Frio River. Bird watching is excellent, star gazing is incomparable and hunting is a possibility. This is the great property for someone that would like to retire in this area, live in one of the units, and nightly rent the other two.

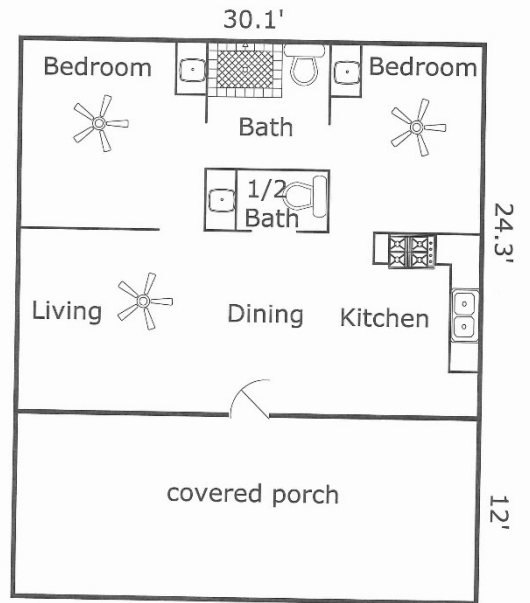
List Price: \$1,100,000



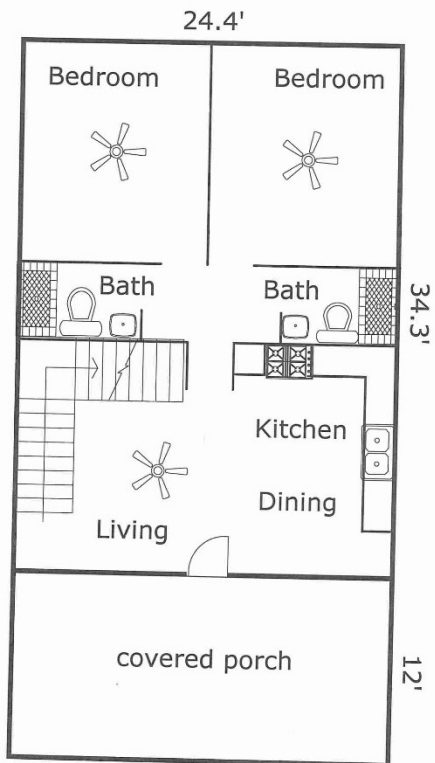
Nadines Cabin



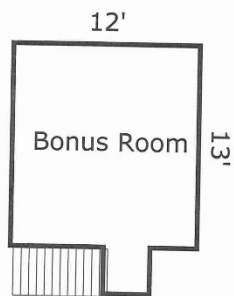
2nd level



Bob's Cabin



The Ponderosa



2nd level



