

# Suttle and Company Real Estate

**Prop #5**

**Lot 4 & 5, Frio Rio Subdv, 9.15 Ac TBS  
Uvalde, Tx 78801**



*"Your Real Estate  
Professionals"*



## Attributes

- Great Location
- Well
- River Front
- Easy Access



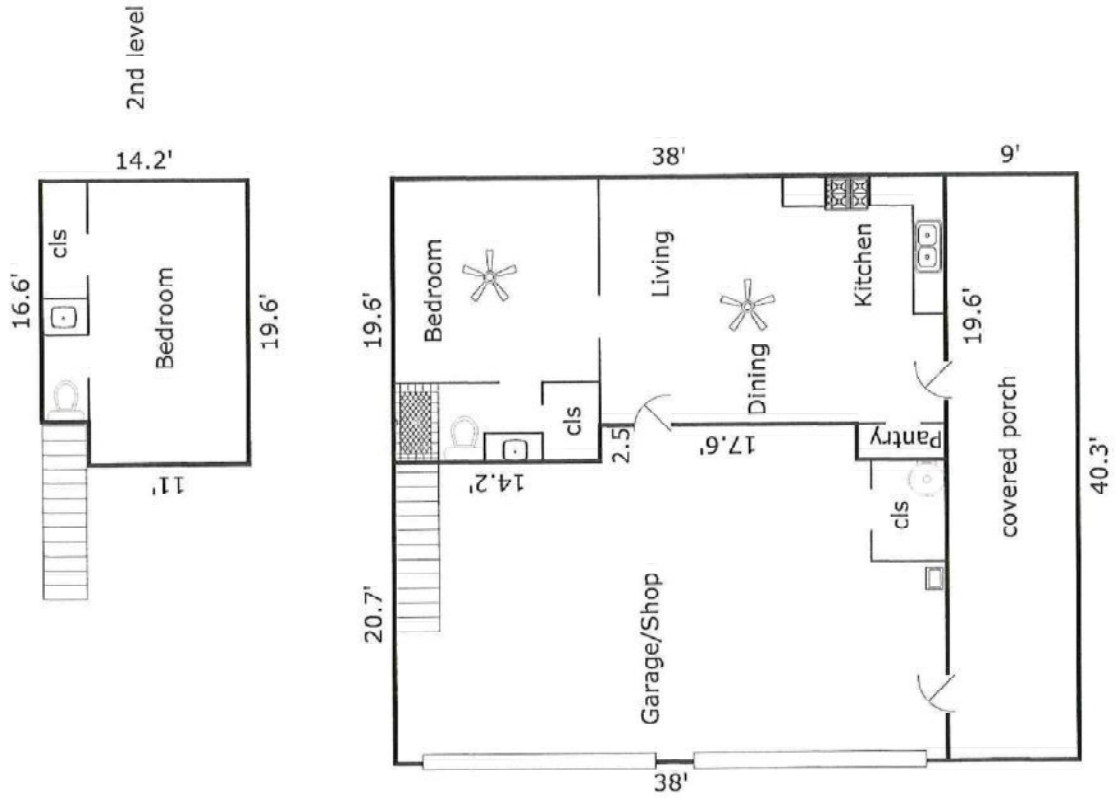
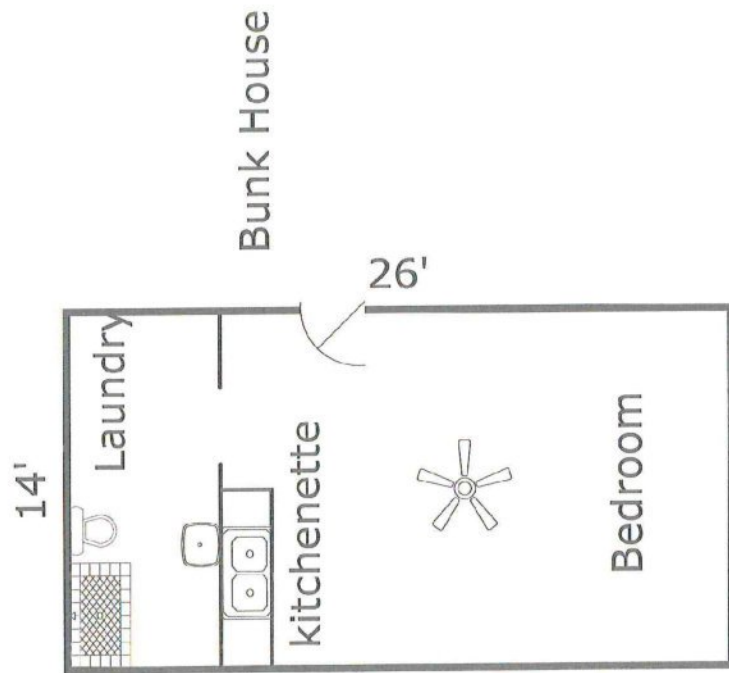
## Suttle and Company Real Estate

1260 Hwy 83 South  
P.O. Box 606  
Leakey, Tx. 78873

Phone: 830/232-5242  
Fax: 830/232-4283

Email: [suttle Realty@htc.net](mailto:suttle Realty@htc.net)  
[www.SuttleandCompany.com](http://www.SuttleandCompany.com)

This is the barndominium with the river frontage that you've been looking for. The main building features a living area, kitchen, and master bedroom and bath on the ground floor. 2nd bedroom and 1/2 bath are on the second level. The detached bunkhouse is complete with a bedroom, kitchenette, and full bath. An outdoor shower is also attached to this building. A concrete sidewalk leads down to the covered patio overlooking the Dry Frio River. If you looking for peace and quiet with approximately 400 feet of river frontage, you've found it. The property is gently rolling and covered with numerous huge "live oaks"! List Price: 675,000



**Guillot**  
Uvalde County, Texas, 8.24 AC +/-



- Boundary
- Wetlands
- Riparian
- Stream, Intermittent
- River/Creek
- Water Body

Dub Suttle

**M** The information contained herein was obtained from sources deemed to be reliable. MapRight Services makes no warranties or guarantees as to the completeness or accuracy thereof.

