

Suttle and Company Real Estate

Property #84
Tracts 1-42
The Ridge at Frio River
Leakey, Tx. Real County



Your Real Estate Professionals



Attributes

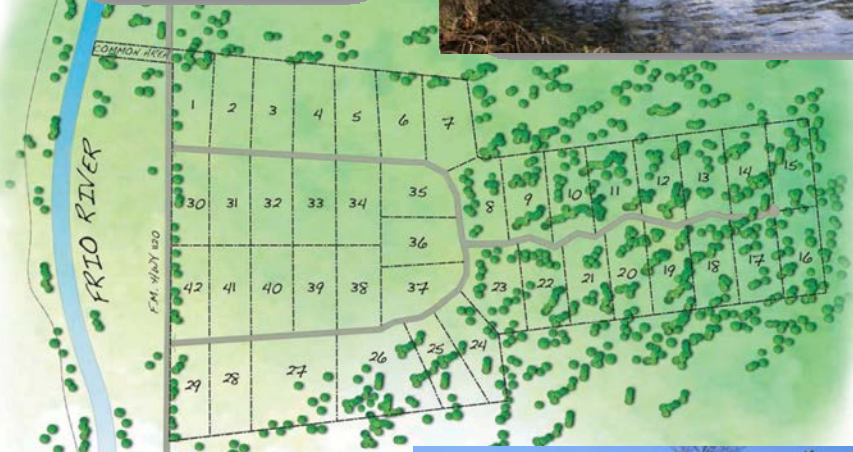
- *Underground Utilities*
- *High-speed Internet*
- *Frio River Access*
- *Pavilion/Cooking Area*
- *B&B Allowed*

Suttle and Company Real Estate

1260 Hwy 83 South
P.O. Box 606
Leakey, Tx. 78873

Phone: 830/232-5242
Fax: 830/232-4283

Email: suttlerealty@hctc.net
www.SuttleandCompany.com



The Ridge contains 42 unique lots perfectly suited for home construction. Each five acre lot provides peaceful & pristine views of the Texas Hill Country. The Ridge is also home to many axis & whitetail deer along with other wildlife. The common river area is home to one of the best "swimming holes" on the Frio River. Huge cypress trees line the riverbanks of The Ridge at the pavilion & cooking area. The clear river, beautiful views, majestic hills, & ideal climate make The Ridge one of the best places to live in the Texas Hill Country. Properties with the exceptional characteristics of this property have historically maintained and increased in value over time.

Prices Start at \$99,500

THE RIDGE SUBDIVISION-PRICING Updated 9-7-17			
Lot #	Lot Size	Price	Status
1	5.00 Acres	\$130,000.00	SOLD
2	5.00 Acres	\$100,500.00	
3	5.00 Acres	\$99,500.00	
4	5.00 Acres	\$99,500.00	
5	5.00 Acres	\$94,500.00	Re-sell Prop#28
6	5.3/2.5Acres	Not Available	Water Plant
7	5.68 Acres	\$159,500.00	
8	5.32 Acres	\$145,500.00	
9	5.00 Acres	\$132,500.00	SOLD
10	5.00 Acres	\$125,000.00	
11	5.00 Acres	\$125,000.00	
12	5.00 Acres	\$125,000.00	
13	5.00 Acres	\$125,000.00	
14	5.00 Acres	\$125,000.00	
15	5.00 Acres	\$115,000.00	SOLD
16	5.01 Acres	\$127,500.00	re-sell Prop#35
17	5.00 Acres	\$130,000.00	
18	5.04 Acres	\$125,000.00	
19	5.00 Acres	\$125,000.00	
20	5.00 Acres	\$112,500.00	SOLD
21	5.00 Acres	\$112,500.00	SOLD
22	5.00 Acres	\$115,500.00	SOLD
23	5.83 Acres	\$157,410.00	SOLD
24	5.23 Acres	\$125,000.00	SOLD
25	5.00 Acres	\$130,000.00	
26	10.06 Acres	\$220,000.00	
27	10.01 Acres	\$220,000.00	
28	5.00 Acres	\$100,000.00	
29	5.02 Acres	\$115,000.00	
30	5.01 Acres	\$115,000.00	
31	5.01 Acres	\$99,500.00	
32	5.01 Acres	\$99,500.00	
33	5.04 Acres	\$99,500.00	
34	5.00 Acres	\$99,500.00	
35	5.10 Acres	\$99,500.00	
36	5.11 Acres	\$99,500.00	
37	5.16 Acres	\$105,000.00	
38	5.02 Acres	\$99,500.00	
39	5.11 Acres	\$99,500.00	
40	5.07 Acres	\$88,750.00	SOLD
41	5.04 Acres	\$99,500.00	
42	5.04 Acres	\$115,000.00	

DAMON AREA
0.69 AC

SECTION 1 - PART OF
SECTION 2 - PART OF
SECTION 3 - PART OF
SECTION 4 - PART OF
SECTION 5 - PART OF
SECTION 6 - PART OF
SECTION 7 - PART OF
SECTION 8 - PART OF
SECTION 9 - PART OF
SECTION 10 - PART OF
SECTION 11 - PART OF
SECTION 12 - PART OF
SECTION 13 - PART OF
SECTION 14 - PART OF
SECTION 15 - PART OF
SECTION 16 - PART OF
SECTION 17 - PART OF
SECTION 18 - PART OF
SECTION 19 - PART OF
SECTION 20 - PART OF
SECTION 21 - PART OF
SECTION 22 - PART OF
SECTION 23 - PART OF
SECTION 24 - PART OF
SECTION 25 - PART OF
SECTION 26 - PART OF
SECTION 27 - PART OF
SECTION 28 - PART OF
SECTION 29 - PART OF
SECTION 30 - PART OF
SECTION 31 - PART OF
SECTION 32 - PART OF
SECTION 33 - PART OF
SECTION 34 - PART OF
SECTION 35 - PART OF
SECTION 36 - PART OF
SECTION 37 - PART OF
SECTION 38 - PART OF
SECTION 39 - PART OF
SECTION 40 - PART OF
SECTION 41 - PART OF
SECTION 42 - PART OF

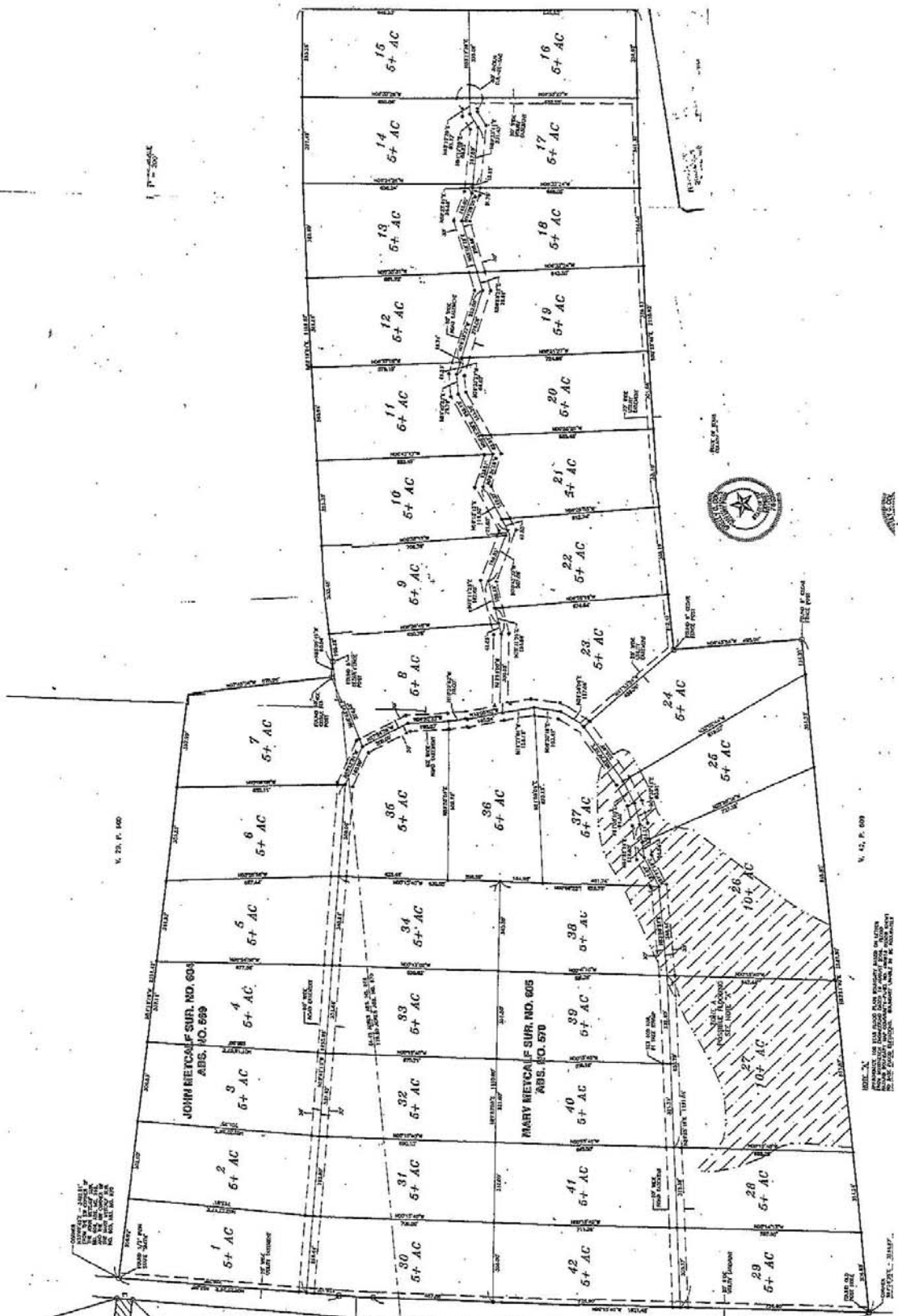
F.M. HWY. 1120

JOHN MEYCALP SUR. NO. 604
ABIS. NO. 669

MARY MEYCALP SUR. NO. 605
ABIS. NO. 670

V. 21, P. 140

V. 21, P. 140



SECTION 1 - PART OF
SECTION 2 - PART OF
SECTION 3 - PART OF
SECTION 4 - PART OF
SECTION 5 - PART OF
SECTION 6 - PART OF
SECTION 7 - PART OF
SECTION 8 - PART OF
SECTION 9 - PART OF
SECTION 10 - PART OF
SECTION 11 - PART OF
SECTION 12 - PART OF
SECTION 13 - PART OF
SECTION 14 - PART OF
SECTION 15 - PART OF
SECTION 16 - PART OF
SECTION 17 - PART OF
SECTION 18 - PART OF
SECTION 19 - PART OF
SECTION 20 - PART OF
SECTION 21 - PART OF
SECTION 22 - PART OF
SECTION 23 - PART OF
SECTION 24 - PART OF
SECTION 25 - PART OF
SECTION 26 - PART OF
SECTION 27 - PART OF
SECTION 28 - PART OF
SECTION 29 - PART OF
SECTION 30 - PART OF
SECTION 31 - PART OF
SECTION 32 - PART OF
SECTION 33 - PART OF
SECTION 34 - PART OF
SECTION 35 - PART OF
SECTION 36 - PART OF
SECTION 37 - PART OF
SECTION 38 - PART OF
SECTION 39 - PART OF
SECTION 40 - PART OF
SECTION 41 - PART OF
SECTION 42 - PART OF